



Alarm Cleared

Last triggered event
resolved at 6:48 AM

SEE THE RISK WITH **ITL**

Safety at your
fingertips.

THE RISK:

You can't protect your facility from risks you can't see.

Most hazards don't start with flames or smoke. They start as invisible heat, building quietly until it's too late. *iTL* gives you the visibility to catch problems early and act before they escalate.



Fires spread *FAST*



iTL gives you the time to stop it.

THE SOLUTION:

Be the first to see the risk.

Because by the time you smell smoke, it's already too late.



Get alerted the moment risk is detected



Trigger automatic emergency response



Every event is documented automatically



See all your sites in one place



Up and running in a day



"We restored our insurance coverage and reduced premiums after implementing"



Amber
Plant Leadership



"We get instant alerts and can see exactly where heat is building. It keeps our site safe even when no one's here."



Brandon
Operations Manager



"It's faster, simpler, and far more effective than what we used before"



Nick
Operations Supervisor



"Early detection made it easy to improve safety across our community"



John
Fire Chief

HOW IT WORKS:

From invisible risk to early detection.

01



See the Risk Early

Thermal cameras can spot heat building up long before smoke alarms or sprinklers react.

02



Get Notified Instantly

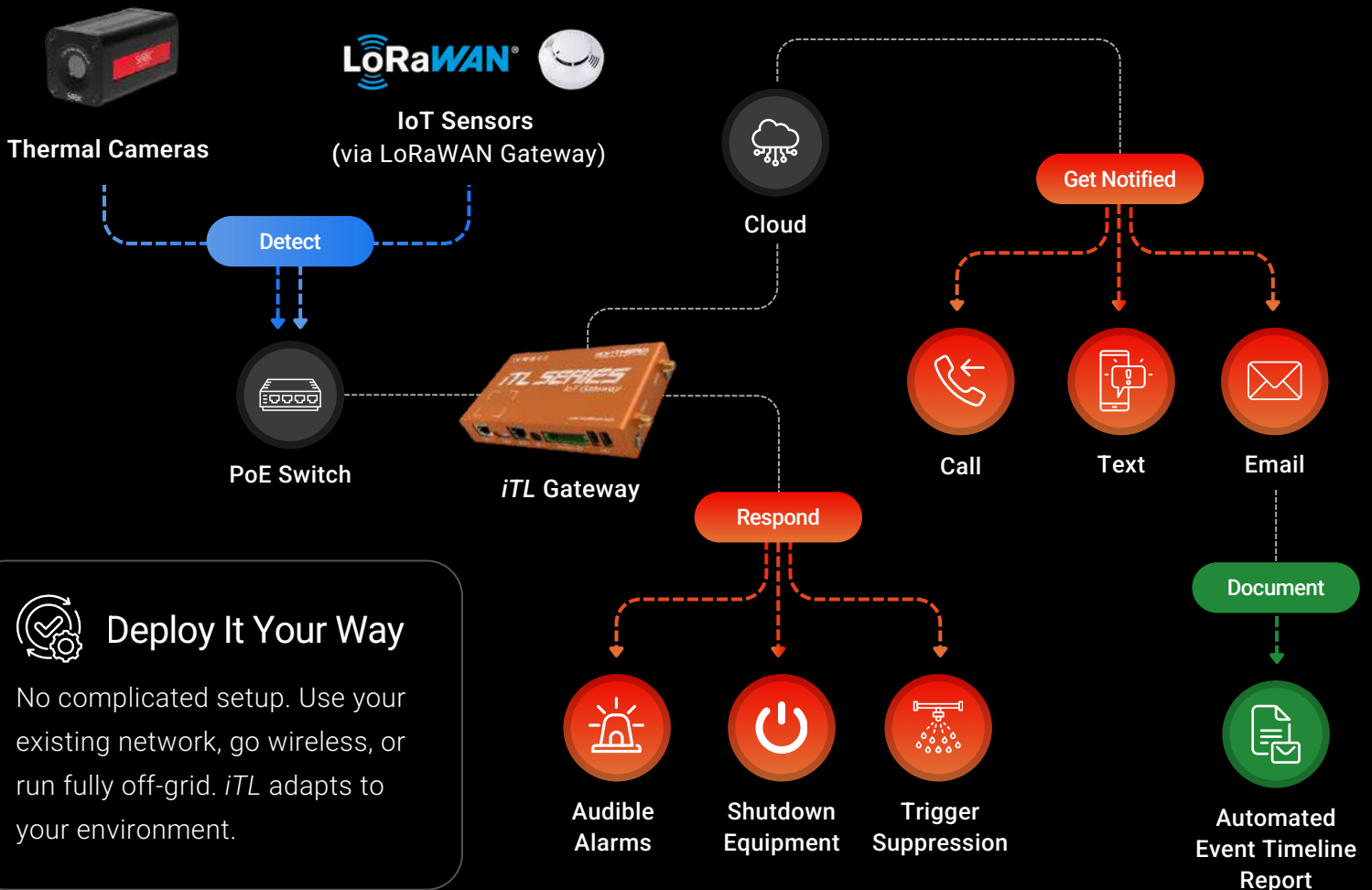
When a risk is detected, your team is notified instantly with actionable alerts so nothing gets missed.

03



Take Action Before It Spreads

Stop problems early with full visibility into what's happening and where.



Deploy It Your Way

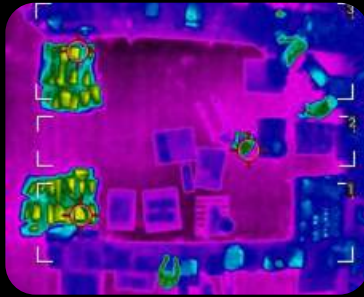
No complicated setup. Use your existing network, go wireless, or run fully off-grid. *iTL* adapts to your environment.

WHERE IT'S USED:

If heat is a risk, *iTL* helps you see it early.



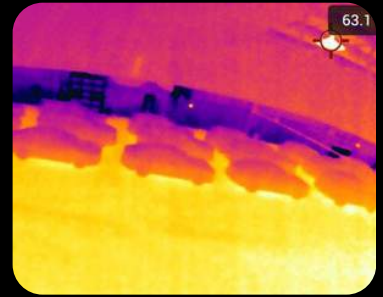
Substations



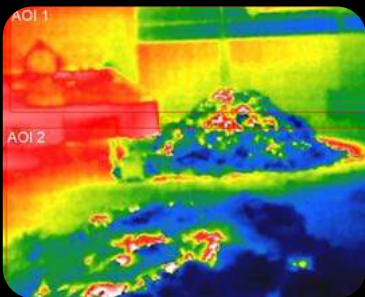
Battery Storage



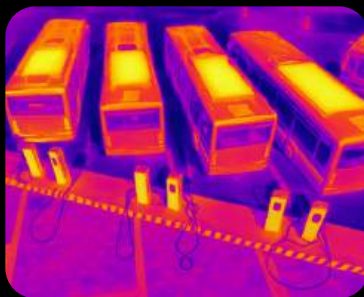
Industrial Laundry



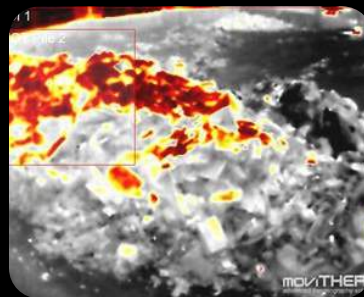
EV Charging



Waste & Recycling



Bus Depots



Scrap Yards



No matter your industry,
iTL adapts.

WHAT YOU GAIN:

What your facility looks like with *iTL*.



Peace of Mind, 24/7

Know your system is always watching.
Less stress. More focus.



A Safer Facility

Protect your people, your assets, and
your operations.



Protection That Pays Off

One prevented incident can pay for the
system.



Stronger with Your Insurer

Clear data helps support better
conversations and outcomes.



Stay One Step Ahead

Catch issues early, before they turn into
problems.



A Facility Others Trust

Operate with confidence, not luck.

SMART ALERTS

Everyone who needs to know, knows instantly.

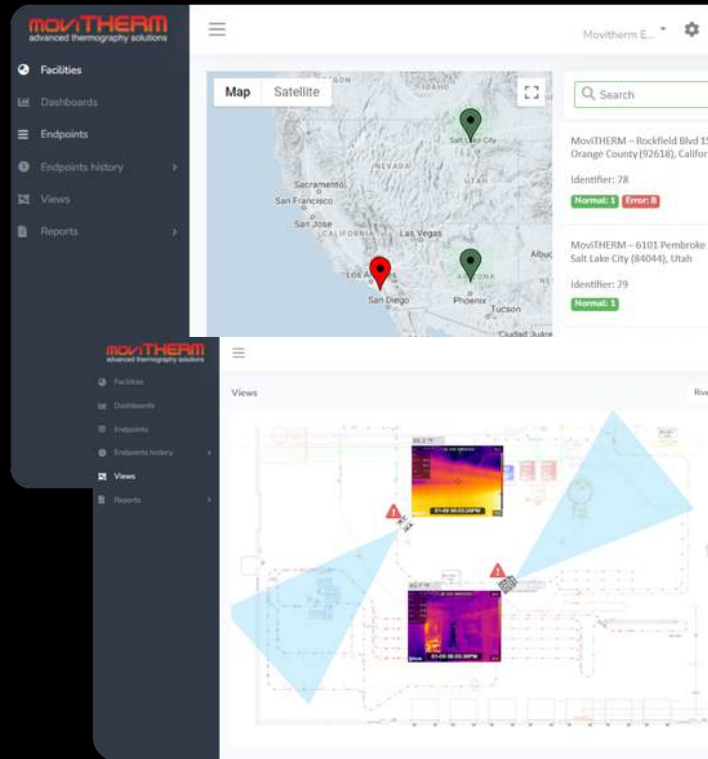
Choose between **text, voice call, or email** with severity-based thresholds and shift scheduling so the right people are always in the loop, day or night.



FACILITY AWARENESS

See exactly where the risk is coming from.

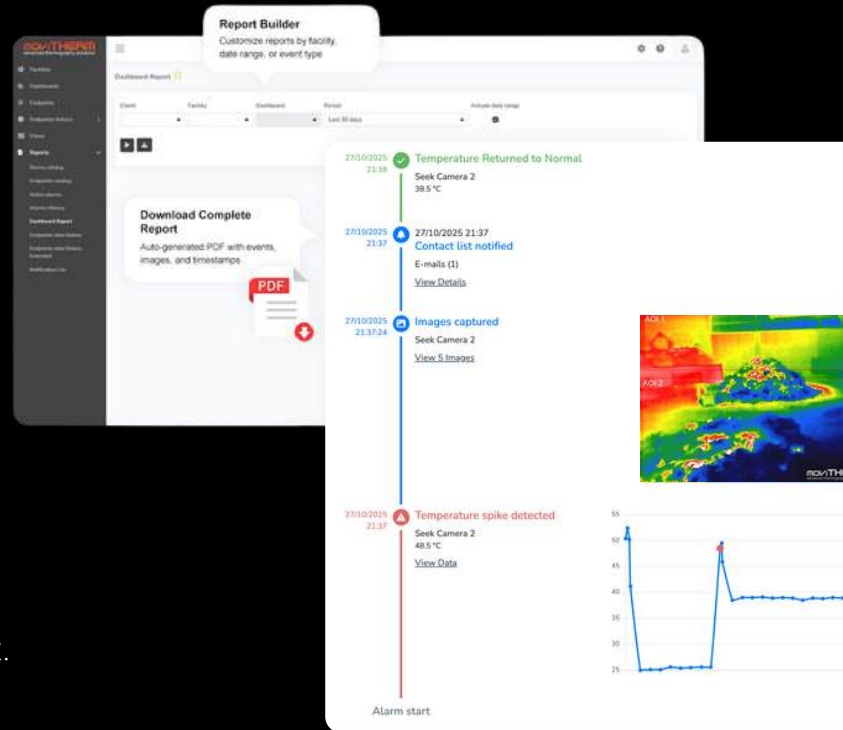
Every alarm is pinned to its exact location on your site so your team knows where to go instantly. Manage multiple facilities from one dashboard.



AUTOMATIC REPORTS

When your insurer asks, the proof is already there.

Every risk generates a timestamped PDF report with images, temperatures, and a full event history. Everything is stored and ready to share the moment your insurer or leadership asks for it.



AI FILTERING

Reduce false alarms with AI object filtering.

AI-powered object detection distinguishes real thermal events from routine activity like vehicles and equipment.





moviTherm
advanced thermography solutions

iTL

Schedule a Demo to See *iTL* in Action



Phone Number:

(949) 699-6600



Website:

movitherm.com



Location:

**173 Technology Drive, STE 150
Irvine, CA 92618**