



Dual-Vision PTZ Thermal Imaging Camera

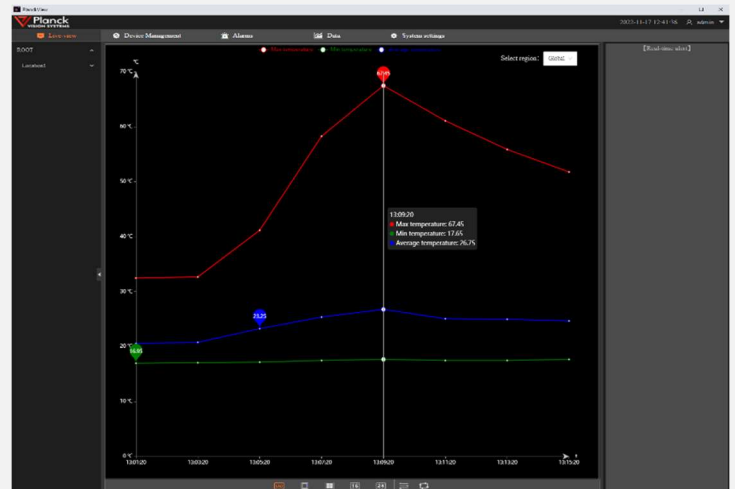
Pan-tilt Mount Temperature Monitoring with Infrared and Visual Cameras

Introducing the dual-vision PTZ thermal imaging camera, equipped with high-definition variable visible light and high-performance infrared thermal imaging. The PTZ produces high-definition images with fully radiometric temperature measurement. The 360° rotating gimbal provides a wider monitoring range with 30x zoom. Designed to help safeguard your plant and measure temperature slight differences of your critical assets, it allows you to see problems before they become costly failures; preventing downtime and enhancing worker safety.



Camera Features:

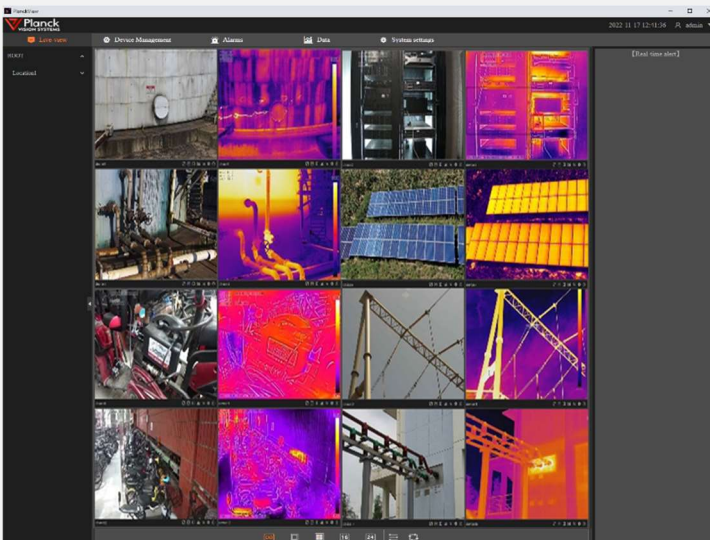
- Supports widely adopted network protocols
- Global temperature monitoring with user defined zones
- Supports user defined alarm protocols
- Alarm activated relays and external sensor monitoring
- Temperature accuracy of $\pm 2^{\circ}\text{C}$
- 360° Rotating PTZ for wider monitoring area



Collect and analyze data

Typical Applications:

- Substations & Tunnels
- Storage Facilities
- Data Centers & IT Server Rooms
- Refrigeration Warehouses
- Mass Transit Facilities
- Warehouse Fire Prevention
- AND MORE...



Specifications

Thermal	Sensor	Uncooled VOx Microbolometer (30Hz)
	Spectral Range (um)	7.5-13.5
	NETD	<50mK (@25°C, F#1.0)
	Resolution (pixels)	640 x 480
	Lens Options f=16.8 mm:	26° (H) x 19.2° (V) FOV, 0.62 mrad Res, variable focus
	f=13.5 mm:	32° (H) x 24.2° (V) FOV, 0.73 mrad Res, fixed focus
	f=18 mm:	24° (H) x 18° (V) FOV, 0.59 mrad Res, fixed focus
	f=25 mm:	17.4° (H) x 13° (V) FOV, 0.45 mrad Res, fixed focus
	f=36 mm:	12° (H) x 9° (V) FOV, 0.32 mrad Res, fixed focus
Measurement Range	High Gain: -20C to 150C; Low Gain: 0C to 550C	
Accuracy (@ 2m)**	±2C or ±2%* (whichever is greater)	
Color Palette	18	
Visible	Sensor	1/1.8" CMOS
	Resolution (pixels)	1920 x 1080
	Low Light Illumination	Color: 0.01 Lux @(F1.5) Black and White: 0.001Lux @(F1.5)
	IR	IR
Video	Visible Resolution	Main: 1080P(@30fps), Sub: D1
	Thermal Resolution	Main: 640x480 (@30fps), Sub: 640x480
	Video Compression	H.264; Up to 6 Streams
	Visible/Thermal Fusion	0 Mode(s)
Network	Data Rate	10/100 Mbps
	Protocol	HTTP, RTP, RTSP
	API	ONVIF, JSON Restful
	Data Transfer	FTP
	Web UI	3 User/Pass Permissions
I/O Connectors	RJ45	Yes
	Analog Video Out	PAL/NTSC w/BNC
	Audio I/O	Yes
	Fault Relay	No
	Relay Switch	1-Input; 1-Output
	Storage	TF Card 256G
	Measurement (Temperature)	Regions
Shapes		Spot, Line, Rectangle, Polygon
Alert/Alarm Rules		Above, Below, Between, Out of Range
Relative Measurements		Yes
Area Shielding		4 Regions
Fire Area/Coverage		Yes
Smart Functions	Area Security	None
Motion	Pan	360° continuous, with ±0.1° accuracy at ≤100°/s speed
	Tilt	±120°, with ±0.1° accuracy at ≤60°/s speed
General	Operation	Temperature: -40C to 70C; RH≤95%
	Ingress Protection	IP66
	Power	24V AC/DC, ≤65W Terminal Block
	Dimension	352x259x276 mm (13.87x10.2x10.87 in)
	Weight	8 kg (17.6 lb)

*Disclaimer: Specifications subject to change without notice **Laboratory test data at room temperature

MoviTHERM, established in 1999, is dedicated to advancing thermographic technology for a variety of applications, including early fire detection, condition monitoring, and non-destructive testing. Our experience, bolstered by strategic partnerships, ensures that our clients are equipped with the latest in smart IR solutions. With our focus on client satisfaction and a mission to provide quality, cost-effective thermal imaging systems, MoviTHERM customers benefit from tailored, state-of-the-art solutions designed to meet specific application needs and operational demands. For more detailed information, please visit movitherm.com/about-us/.