

MOVITHERM
advanced thermography solutions

TL SERIES

Intelligent Thermal Link

Powered by **FLIR**
A TELEDYNE COMPANY

The image displays the MOVITHERM software interface across multiple devices. The laptop screen shows a dashboard with the following sections:

- BATTERY POWER:** A gauge showing 0.4 GB of current data period (cumulative).
- ALARM HISTORY:** A table listing alarm events.
- TEMPERATURE HISTORY:** A line graph showing temperature trends for multiple cameras over time.
- CAMERA B LAST IMAGE:** A thermal image showing a temperature of 52.7 °F.

The smartphones show mobile views of the software, including thermal images and temperature graphs. One smartphone displays a thermal image with a temperature of 313 °F. Another smartphone displays a temperature graph with a legend for Camera A through H.

The FLIR thermal camera is shown in the foreground, featuring a lens with the text "FLIR M5610 Industrial Thermal Camera" and "FOV = 63.0° x 40.1° @ 1/3" and "Sensor = 1280 x 800". The FLIR logo is visible on the side of the camera.

OVERVIEW

MoviTHERM Intelligent Thermal Link

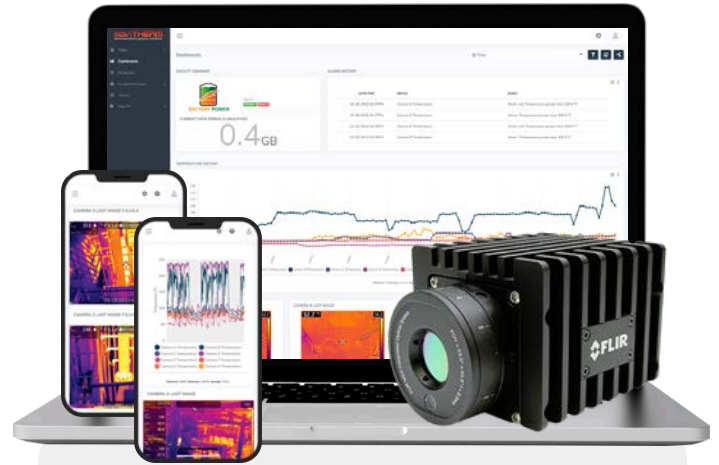
Connect IR Cameras to the Cloud Effortlessly

MoviTHERM Intelligent Thermal Link (iTIL) is an all-in-one cloud platform for effortless thermal imaging integration. Whether using a single infrared camera or multiple, iTIL seamlessly connects them. iTIL intelligent gateways ensure all your sensors are connected, offering backup notifications when offline.

Dive into intuitive, graphic-rich dashboards from any device, anytime, anywhere. View measurements, monitor sensor health, or tweak settings on the go. Most crucially, stay informed and prepared. iTIL ensures you never miss a beat, sending voice, text, and email alerts to the right people when it matters.



iTIL Sample Configuration



Highlights

Features & Benefits

- Effortless integration with thermal cameras
- Real-time comprehensive monitoring from any location
- Reliable alert system for timely response to critical events
- Intuitive control via user-friendly interface and customizable settings
- Scalable design for easy expansion and customization
- Proactive maintenance through intelligent gateways for reduced downtime

Applications

- Early Fire Detection
- Condition Monitoring
- Process Monitoring
- Intrusion Detection & More

COMPONENTS

Infrared Cameras

Your Vision to Thermal Insight

The FLIR A50/A70 smart infrared cameras act as eyes to iTL that offer a unique ability to "see" heat for asset condition monitoring and early fire detection. This proactive detection ensures timely interventions and enhances safety measures.



iTL Gateways

The Brainpower Behind Effortless Monitoring

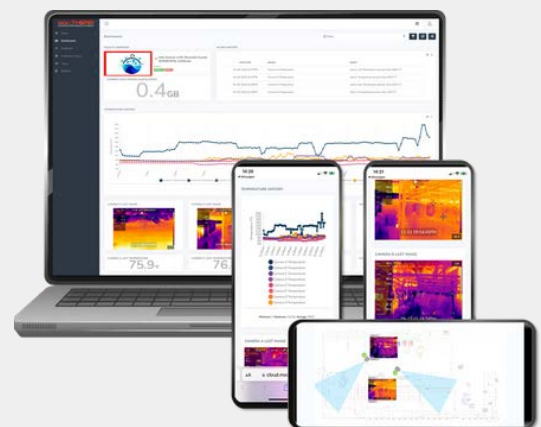
These intelligent gateways aggregate data from multiple IR cameras and sensors for real-time analysis. They can trigger local alarms and allow remote control, maintaining functionality even without an Internet connection for reliable monitoring.



iTL Studio

Your Window to Secure Thermal Monitoring

iTL Studio is a subscription based platform that offers secure, cloud-based monitoring for single or multi-facility setups. It features a customizable dashboard, sensor health alerts, and threshold alarms. Users can receive email, text, and voice notifications and remotely access the system with an internet connection.



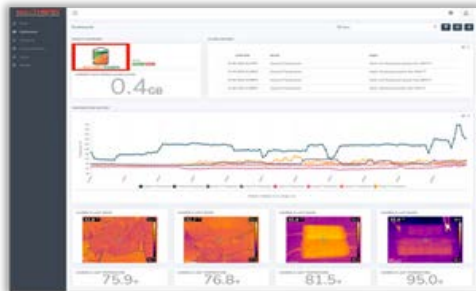
APPLICATIONS

MoviTHERM iTL can be deployed in various settings. The monitoring set up can be as simple as a single camera or include multiple cameras and other detection sensors for monitoring large and complex areas.

Example of IoT Thermal Monitoring Applications:



iTL STUDIO

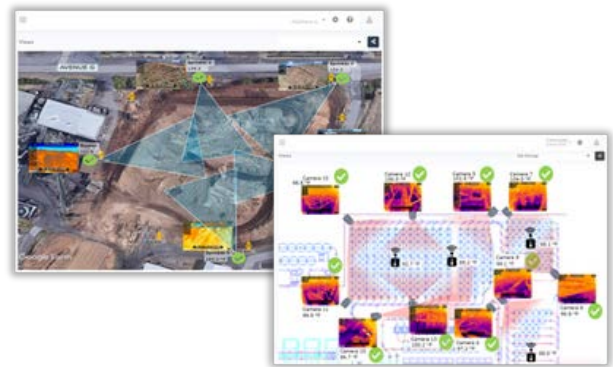


Comprehensive Dashboards

The dashboard display keeps users well-informed through its various features. With a customizable layout, users can tailor the dashboard to meet their specific needs. The facility selector allows easy navigation between different sites, while real-time alarm status and sensor trending provide immediate insights into system health. Additionally, thermal imagery offers a complete picture of the monitored areas, creating a powerful display for data-driven decisions.

Informative Views

The Views display significantly enhances situational awareness by allowing users to upload facility photos, maps, and CAD schematics. Users can overlay cameras and sensors on these graphics to easily visualize their fields of view and locations. This integrated view enables quick identification of alarms and their corresponding locations, improving response times. Furthermore, users can share these customized, insightful views with others through a simple web link.



Alerts & Notifications

The alerts and notifications are closely integrated with sensor alarms, keeping users promptly informed about both sensor health and threshold alerts. Users have the flexibility to receive these notifications through various channels, including email, text messages, and voice calls. Moreover, these alert messages are fully customizable, allowing users to receive the information they need for timely and effective decision-making.

Easy Access

iTL Studio is OS independence offering unparalleled ease of access, allowing users to connect from any smart, internet-enabled device anywhere in the world. This ensures continuous monitoring and immediate response capabilities, making it an ideal solution for comprehensive, real-time monitoring.



The iTL Difference

MoviTHERM iTL sets a new standard in event-based monitoring with its cloud-based software, offering easy access from any device, anywhere. Unlike traditional systems, it requires no dedicated server, offers automatic software updates, and is unaffected by OS changes. iTL is a more **flexible, efficient, and cost-effective** solution.

	MoviTHERM iTL	Traditional Systems
Application Software	Resides in the cloud. Can be accessed from any PC, smart phone, or tablet via web browser.	Installed on a dedicated computer acting as a system server. Can only be accessed by devices connected to the server.
User Licenses	Unlimited with no additional charge.	Limited local installs as per license agreement.
Software Updates	Automatic and always current. No local installation necessary.	Manual. Require local installation to have current functionality.
Operating Software (OS) Updates	No impact.	Could impact functionality of system
Alarms & Alerts	Included with automatic updates.	May require separate hardware or software with separate manual updates.
Firmware Updates	Automatic. Remotely done via cloud.	Manual. Require local connection & installation.
Computer Server Hardware Updates	Not needed as key functionality resides in the cloud.	May be required to have adequate processing for software updates with new functionality.



iTL STARTER PACK



AFFORDABLE SOLUTION

Low Capital Cost



24/7 MONITORING

Constant, Error-Free Surveillance



AUTOMATED INSIGHTS

Automated Temperature Analysis and Reporting



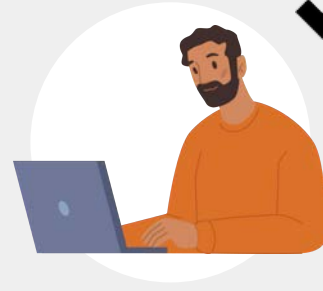
INSTANT ALERTS

Immediate Alerts for Potential Issues

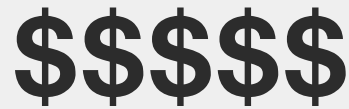


EFFICIENT & RELIABLE

Seamless Integration and Dependable Performance



TRADITIONAL MONITORING



HIGH COST

High Operating Cost



SUBJECT TO INTERRUPTIONS

Inconsistent with Down Time



MANUAL EFFORT

Manual and Time-Consuming



DELAYED RESPONSE

Delayed Response Times



NEEDS TRAINING

Requires Training and Supervision

MOVITHERM

advanced thermography solutions



Phone

(949) 699-6600



Website

www.movitherm.com



Address

173 Technology Dr, STE 150
Irvine, CA 92618, USA