

MoviThERM's IoT Thermal Monitoring Kit

Connect IR Cameras to the Cloud Effortlessly

moviThERM advanced thermography solutions

Cloud I/O Gateway

Dashboard:

- BATTERY POWER:** CURRENT DATA PERIOD (CUMULATIVE) 0.4GB
- ALARM HISTORY:**

DATE/TIME	DEVICE	EVENT
10-26-2022 01:47PM	Camera D Temperature	Alarm on: Temperature greater than 200.0 °F
10-26-2022 01:47PM	Camera D Temperature	Alarm: Temperature greater than 200.0 °F
10-26-2022 01:48PM	Camera D Temperature	Alarm on: Temperature greater than 200.0 °F
10-26-2022 01:48PM	Camera D Temperature	Alarm: Temperature greater than 200.0 °F

TEMPERATURE HISTORY: Line graph showing temperature (°F) over time for multiple cameras.

CAMERA A LAST IMAGE: 51.8 °F, 53.7 °F

CAMERA B LAST IMAGE: 52.7 °F, 54.2 °F

OVERVIEW

MoviTHERM's IoT Thermal Monitoring Kit

Connect IR Cameras to the Cloud Effortlessly

Upgrade your stand-alone IR camera monitoring with the MoviTHERM's IoT Thermal Monitoring Kit, a streamlined solution for advancing to a cloud-based system. This kit, designed to complement existing infrared cameras, transforms traditional monitoring into an integrated, smart safety network.



Effortlessly easy to set up without complex software, it connects your IR cameras to the cloud, enabling real-time, event-based notifications via text, voice, and email. With this kit, you can remotely access camera images and temperature trends, enhancing your situational awareness and operational efficiency.

Ideal for those looking to elevate their existing IR camera setup, the MoviTHERM's IoT Thermal Monitoring Kit is the key to a more connected, informed, and safer monitoring environment.



iOT Thermal Monitoring Kit Sample Configuration

Highlights

Features & Benefits

- Effortless integration with thermal cameras
- Real-time comprehensive monitoring from any location
- Reliable alert system for timely response to critical events
- Intuitive control via user-friendly interface and customizable settings
- Scalable design for easy expansion and customization
- Proactive maintenance through intelligent gateways for reduced downtime

Applications

- Early Fire Detection
- Condition Monitoring
- Process Monitoring
- Intrusion Detection & More

COMPONENTS

Infrared Cameras

Your Vision to Thermal Insight

Infrared cameras act as eyes to the MoviTHERM's IoT Thermal Monitoring Kit offering a unique ability to "see" heat for asset condition monitoring and early fire detection. This proactive detection ensures timely interventions and enhances safety measures.



*IR cameras sold separately

iTL Gateways

The Brainpower Behind Effortless Monitoring

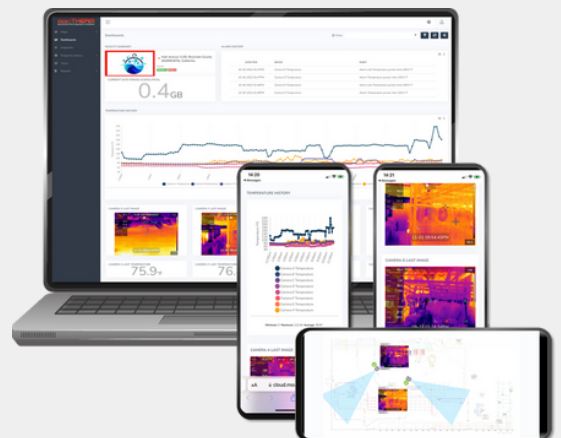
These intelligent gateways aggregate data from multiple IR cameras and sensors for real-time analysis. They can trigger local alarms and allow remote control, maintaining functionality even without an Internet connection for reliable monitoring.



iTL Studio

Your Window to Secure Thermal Monitoring

iTL Studio is a subscription based platform that offers secure, cloud-based monitoring for single or multi-facility setups. It features a customizable dashboard, sensor health alerts, and threshold alarms. Users can receive email, text, and voice notifications and remotely access the system with an internet connection.



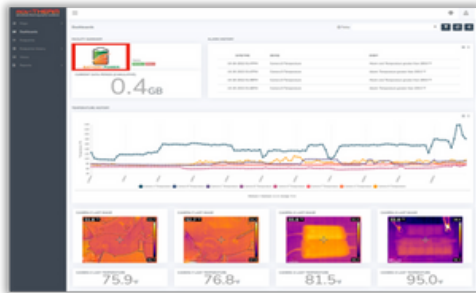
APPLICATIONS

MoviTHERM's IoT Thermal Monitoring Kit can be deployed in various settings. The monitoring set up can be as simple as a single camera or include multiple cameras and other detection sensors for monitoring large and complex areas.

Example of IoT Thermal Monitoring Applications:



iTL STUDIO

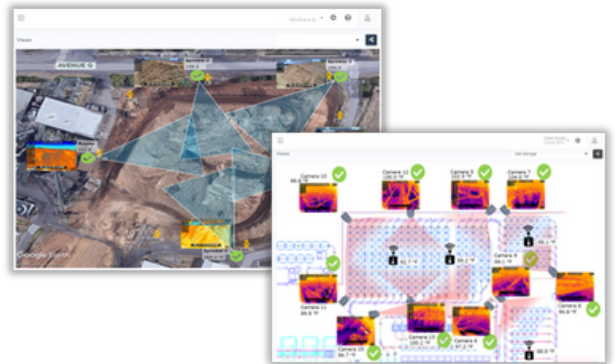


Comprehensive Dashboards

The dashboard display keeps users well-informed through its various features. With a customizable layout, users can tailor the dashboard to meet their specific needs. The facility selector allows easy navigation between different sites, while real-time alarm status and sensor trending provide immediate insights into system health. Additionally, thermal imagery offers a complete picture of the monitored areas, creating a powerful display for data-driven decisions.

Informative Views

The Views display significantly enhances situational awareness by allowing users to upload facility photos, maps, and CAD schematics. Users can overlay cameras and sensors on these graphics to easily visualize their fields of view and locations. This integrated view enables quick identification of alarms and their corresponding locations, improving response times. Furthermore, users can share these customized, insightful views with others through a simple web link.



Alerts & Notifications

The alerts and notifications are closely integrated with sensor alarms, keeping users promptly informed about both sensor health and threshold alerts. Users have the flexibility to receive these notifications through various channels, including email, text messages, and voice calls. Moreover, these alert messages are fully customizable, allowing users to receive the information they need for timely and effective decision-making.

Easy Access

iTL Studio offers unparalleled ease of access, allowing users to connect from any smart, internet-enabled device anywhere in the world. This ensures continuous monitoring and immediate response capabilities, making it an ideal solution for comprehensive, real-time monitoring.



MOVITHERM

advanced thermography solutions



Phone

(949) 699-6600



Website

www.movitherm.com



Address

173 Technology Dr, STE 150
Irvine, CA 92618