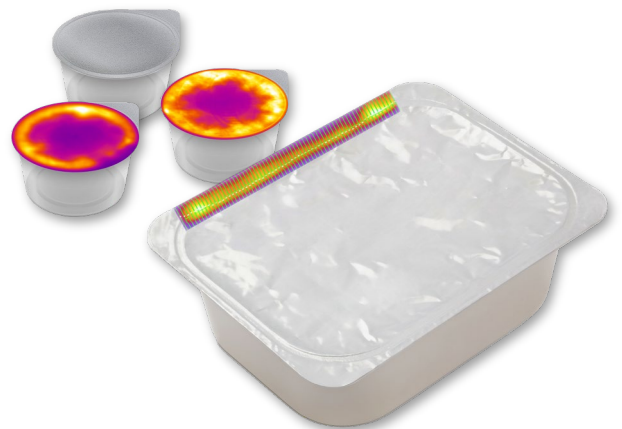




## Thermal Seal Inspection for Packaging



MoviTHERM Thermal Seal Inspection (TSI) for packaging provides 100% in-line, high-speed integrity inspection for heat-sealed packaging. Using high-resolution thermal imaging and advanced machine vision analysis, each package is imaged and inspected.



### RELIABLE DEFECT DETECTION

Intelligent programming identifies common seal defects and causes.

- Seal creep and creasing
- Product trapping and damage
- Weak and impartial seals
- Packaging Leaks
- Holes and thin spots

### PEACE OF MIND

Safeguard your brand promise with 24/7 intelligence and reporting.

- Maintain sterile packaging and prevent contamination.
- Ensure consumer confidence and satisfaction.
- Prevent costly recalls and returns.
- Performance awareness with statistical data output and reporting.

### EASY INTEGRATION

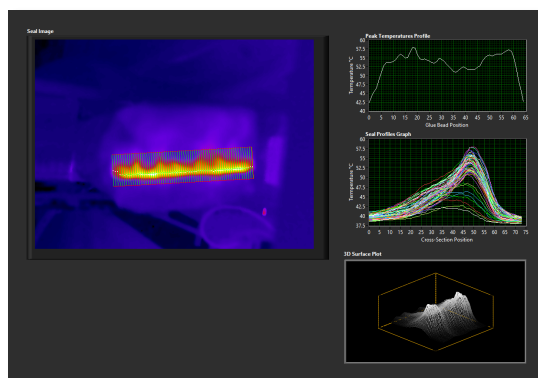
TSI speaks the most common industrial languages for easy integration.

- Standard Ethernet/IP interface.
- Ready for digitalization (IIoT, Cloud, Industry 4.0).
- Built in digital I/O for alerting and product ejection.
- Optional FDA CFR 21 Part 11

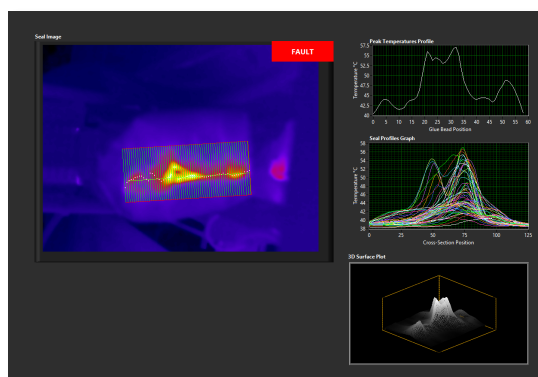
# moviTHERM TSI

## Features

- High-performance infrared camera.
- Standard powder-coated Industrial Electrical Enclosure with Touch-Screen PC and application-specific software GUI interface (Optional Stainless-Steel enclosure for food & beverage or pharmaceutical environments).
- Interactive inspection Recipe Programmer to accommodate multiple products – or to try different “what-if” scenarios.
- Robust bi-directional PLC interface to transfer status messages and PASS/FAIL results to a plant PLC (Ethernet/IP or Modbus).
- Image FTP to transfer fault images to a remote server for offline review.



MoviTHERM TSI example display of a “good” seal.



MoviTHERM TSI example display of a “bad” seal.

## Specifications

Infrared Camera	
Resolutions	320 x 240, 640 x 480, or 640 x 512
Detector	Uncooled microbolometer or Cooled InSb
Frame Rate	30 or 125 Hz
Accuracy	±2°C (±3.6°F) or ±2% of reading
Power	24/48 V DC 8 W max or 24 VDC (<24 W steady state)
Panel	
Enclosure	Type 4,4X,12,13, 24 x 24 x 8" (600 x 600 x 210mm – H x W x D)
Display	15" HMI Panel PC Multi-Touch Projected Capacitive Touch
Processor	i7-3.0GHz (up to 4.70GHz) Intel Octo-Core (8 cores) CPU - 12MB Cache, UHD Graphics 630 (65W) 16GB DDR4 2400MHz SODIMM RAM 256GB SSD SATA 6.0Gb/s 560/530MB/s 2.5" - Samsung 860 PRO Microsoft Windows 10 IoT Enterprise 2019 LTSC 64-BIT - License For i7, XEON
Power	Switching power supply, 12 VDC (adjustable) output, 13A, 156W, 120/240 VAC nominal input

\*Specifications subject to change without notice. 3/2022

\*IR Camera model depends on package design and line speed.