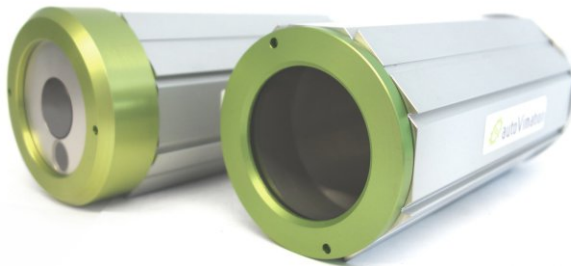




### Benefits:

- For cameras with 62 x 62mm cross section and larger depending on edge radius as Dalsa Linea, Basler Runner, Flir A400-700/GF77a, Jai Spark etc.
- Special lid with Germanium and optical window for Flir A400-700 available
- Reverse version allows the use of all Orca front lids
- High IP protection class and chemical resistance
- Flexible camera positioning, vibration-proof mounting
- Excellent heat dissipation



Sales Contact:

**MOVITHERM**  
advanced thermography solutions

15540 Rockfield Blvd, Suite C-110  
Irvine, CA 92618

Phone: (949) 699-6600  
Email: [info@movitherm.com](mailto:info@movitherm.com)  
<http://www.movitherm.com>

### Technical Details:

<b>Max. camera size (w x h)</b>	62 x 62mm (depending on edge radius also bigger)
<b>Max. lens diameter</b>	87mm 85mm (reverse)
<b>Inner length Clamping area</b>	212mm (200mm reverse) 160mm
<b>Enclosure Dimensions (w x h x l, without cable gland)</b>	96 x 96 x 227mm (214mm reverse) Front lid: d=100mm
<b>Window aperture</b>	68mm (standard) 65mm (reverse)
<b>Standard Window</b>	BK7, double sided AR
<b>3" Germanium</b>	Order Number: 20.000.018
<b>Ge/BK7 Twin-Window</b>	Order Number: 20.000.098
<b>3" Acrylic, double sided AR</b>	Order Number: 20.000.033
<b>Window Seal</b>	EPDM

<b>Weight (without camera mount)</b>	Approx. 1350g
<b>Enclosure Material</b>	Anodized Aluminum
<b>Enclosure Seals</b>	EPDM
<b>Cable Gland Aperture (max. connector size)</b>	22mm (Rear Wall A) 26.5mm (Rear Wall C)
<b>Cable Diameter</b>	Self Drilling (Rear Wall C)
<b>Cable Gland Seal</b>	TPE
<b>Protection class</b>	IP66 (Nema 4) IP67 (Nema 6)



Megalodon Standard and Reverse backside view



The mount guarantees excellent heat dissipation



### Megalodon Standard



Order Numbers (please specify the camera type for each order!):

Rear Wall Type	Order Number	Special Accessory	Order Number
A	2X.X95.200	Surcharge Twin-Window for Flir A400-700/GF77a	20.000.098
C	2X.X96.200		
D	2X.X99.200	Surcharge Rear Wall E	20.040.014

### Megalodon Reverse



Order Numbers (please specify the camera type for each order!):

Rear Wall Type	Order Number	Special Accessory	Order Number
A	2X.X90.200	Surcharge Dome Window	20.040.015
C	2X.X91.200	Surcharge M72 Lid	20.040.018

You can use almost any Orca accessories for the Megalodon Reverse incl. Wind Curtain and Meganova Ringlight!



The Megalodon is extended from one side to 87mm inner diameter to match larger camera types. This end has an outer thread while the opposite has the same inner thread as the Orca. So the 85mm side enables to use all Orca front and back lids and extensions.

The new Twin Window with Germanium and BK7 glass allows the IR and the optical camera of the Flir A400-700 series to be used at the same time.

### Accessories:

Product	Image	Order No.	Product	Image	Order No.	Product	Image	Order No.
Air Nozzle		50.100.025	El. Heating Plate		70.100.018	Mounting Kit 6		5.060.000
3" Wind Curtain		50.100.011	Sun Roof Size M		20.011.002	Mounting Kit 7		5.070.000
Shutter 3"		50.200.021	Sun Roof Size L		20.011.003	Mounting Kit 9		5.090.000
30mm Extension		15.030.030	Corrugated Tube 28mm		20.000.006	Mounting Kit 10		5.100.000
60mm Extension		15.030.085	Deflection Mirror 90°		20.020.004	Mounting Kit 15		5.150.000
Mounting Tool		90.000.004	Mounting Kit 1		5.010.000	Mounting Kit 16/16m		5.160.000 5.160.000m
Cooling Module		60.100.010	Mounting Kit 2		5.020.000	Mounting Kit 17/17m		5.170.000 5.170.000m
Meganova Ring Light		Check data sheet						

Sales Contact:  
**MOVITHERM**  
 advanced thermography solutions

15540 Rockfield Blvd, Suite C-110  
 Irvine, CA 92618

Phone: (949) 699-6600  
 Email: [info@movitherm.com](mailto:info@movitherm.com)  
<http://www.movitherm.com>