

Workswell Fixed Housing

FOR FLIR AX5 CAMERAS



- Durable Metal IP66 Housing
- Interchangeable Front IR Glasses
- Compatible with FLIR Ax5 cameras

Brochure

Workswell Fixed Housing for FLIR Ax5 cameras

Workswell Fixed Housing is specially designed and manufactured for simple and durable FLIR Ax5 camera protection. Workswell Fixed Housing offers effective protection against dust and water jets in harsh environment.

Workswell Fixed Housing system is milled from lightweight metal materials. Complete housing is divided to three independent parts. Front part covers camera lens using high transmittance infrared glasses with sealing rings. End user can select from 3 types of IR glasses – Coated Germanium, ZnSe or BaF2 glass. All glasses are easily and fast interchangeable with special fixing tool.

The central part protects Ax5 camera body and includes mounting holes for mechanical fixing. The central part is also optimized for maximum heat dissipation from camera electronics. For this reason is thermal measurement stable even at high operational temperature fluctuations.

The rear part protects camera connectors. End user can select from pre-drilled holes for cable glands or non-drilled version for user definable cable gland position.



Characteristics

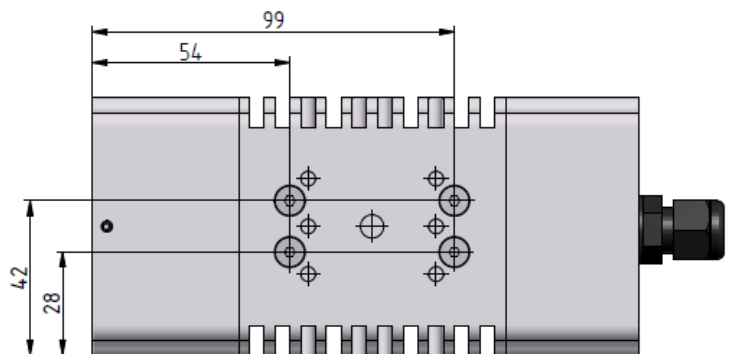
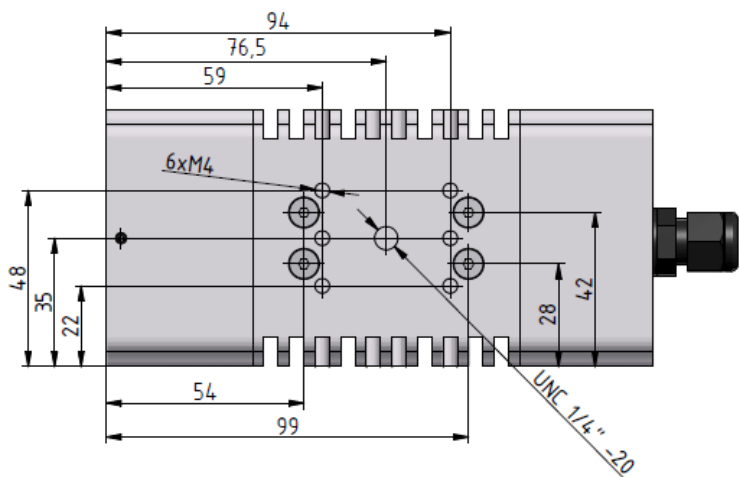
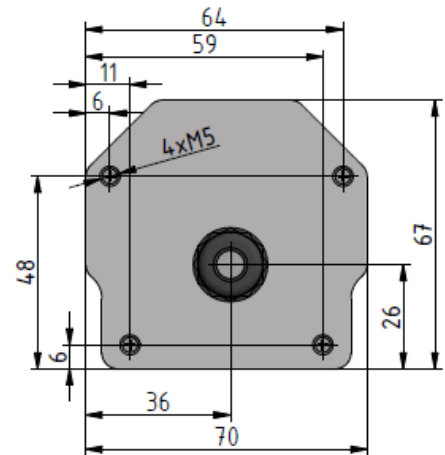
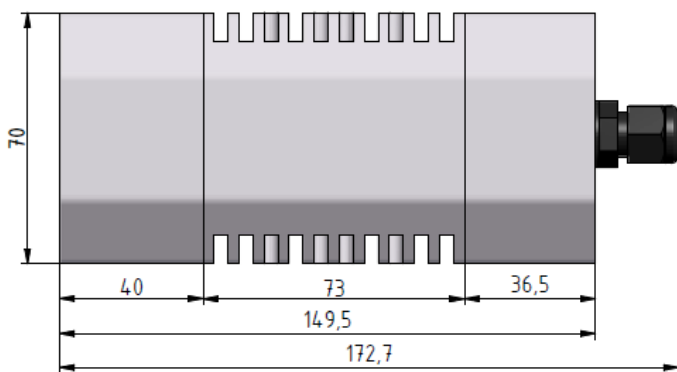
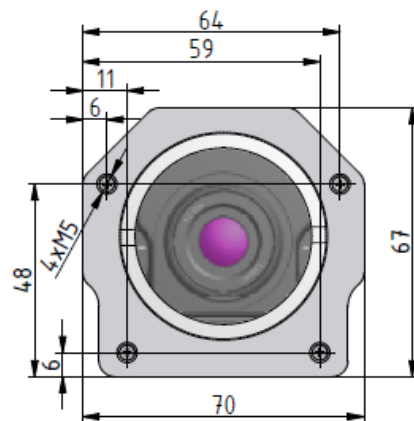
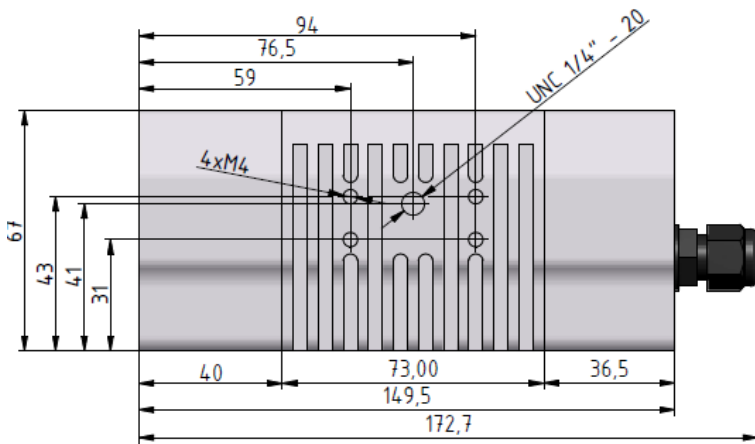
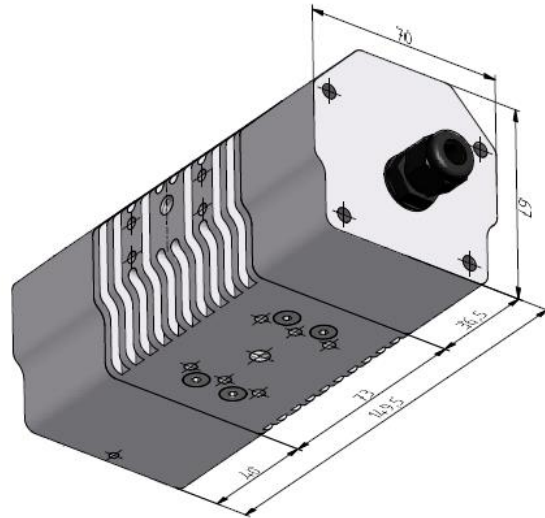
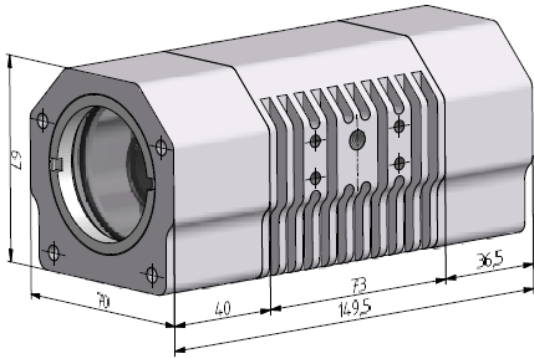
Housing Material	Metal aluminium
Front IR glass	Coated Germanium, ZnSe or BaF2
Cable glands	2 x IP68 metal cable glands
Camera compatibility	FLIR A5, A15, A35 and A65
Internal protection	IP66
Fixing system	On left, right and bottom side
Fixing threads	3 x UNC 1/4", 14 x M4
Housing Color	Black (different colors on request)
Housing Dimensions	145 x 70 x 67 mm
Weight	< 650 g

Features

- Durable metal body
- Compatible with all FLIR Ax5 cameras
- IR glass simply interchangeable by the user
- 3 different IR glass types
- UNC and metric threads for easy fixing
- 2 x metal IP68 Cable glands
- 3 sides on-body fixing system
- Passive cooling system
- IP66 protection
- Optional Air curtain and heating plate system
- Cost effective solution



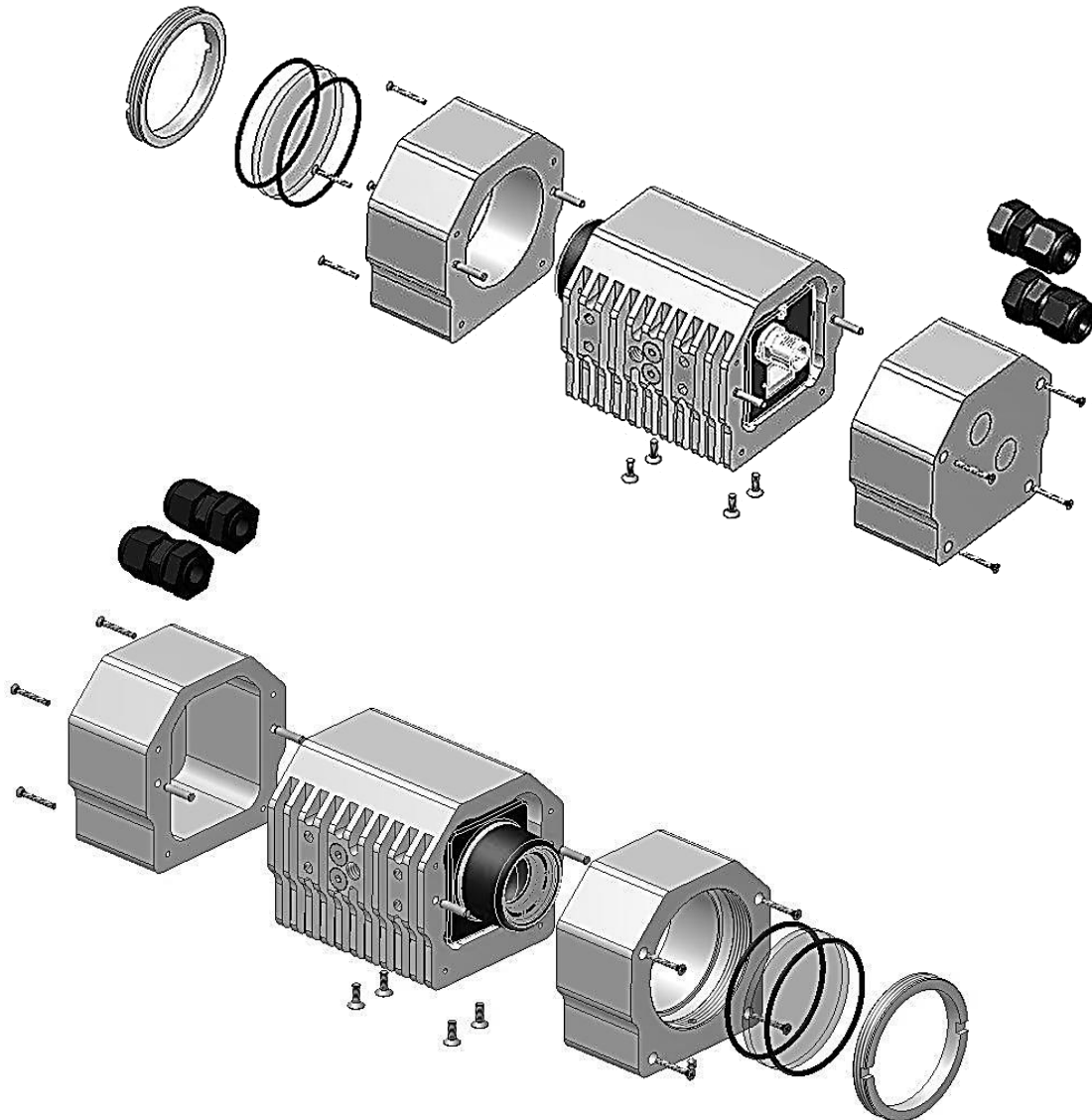
Mechanical drawings



Workswell Fixed Housing



Mechanical drawings – with Ax5 camera inside



Product Overview and Housing Models

Ax5 housing models

Housing model	Ordering Code
Metal Aluminium, Black, IP66, Germanium glass 50mm, cable glands	WFH-ax5-001
Metal Aluminium, Black, IP66, ZnSe glass 50 mm, cable glands	WFH-ax5-003
Metal Aluminium, Black, IP66, BaF2 glass 50 mm, cable glands	WFH-ax5-005

Interchangeable IR glasses

Product	Ordering Code
Germanium glass with coating, 50 mm	G-WFH-ax5-001
ZnSe glass with coating, 50 mm	G-WFH-ax5-002
BaF2 glass with coating, 50 mm	G-WFH-ax5-003

Accessories

Product	Ordering Code
Sealing ring for IR glass	A-WFH-ax5-004
Cable gland IP68	A-WFH-ax5-005
Screwdriver kit	A-WFH-ax5-006

Standard Content of Delivery

Workswell Fixed Housing for FLIR A5, A15, A35 and A65 cameras		
Housing with screw set – Front, middle and rear part	1 pc	1 year warranty
2 x sealing rings	1 pc	-
1 x IR glass with coating	1 pc	-
2 x cable glands	1 pc	-





Contacts

Sales Department

Adam Švestka, MSc., MBA

Mobile: +420 725 955 464

E-mail: adam.svestka@workswell.cz

Headquarters

Libocka 653/51b

160 00, Prague 6

Czech Republic

Branches

Mezirická 100

756 61, Roznov p. R.

Czech Republic

Company contact details

Mobile: +420 725 877 063

E-mail: info@workswell.eu

Web: www.workswell.eu

Univerzitní 1

010 08, Zilina

Slovak Republic

Your authorized distributor:

MOVITHERM
advanced thermography solutions

15540 Rockfield Blvd, Suite C-110
Irvine, CA 92618

Phone: (949) 699-6600

Fax: (949) 699-6601

Email: info@movitherm.com

<http://www.movitherm.com>

