

TECNOVIDEO

CCTV SYSTEMS AND ACCESSORIES

168 SERIES

STAINLESS STEEL CAMERA STATION

SAFE AREA

AISI316L STAINLESS STEEL CONSTRUCTION
FOR USE IN HIGHLY CORROSIVE ENVIRONMENTS
EASY INSTALLATION AND MAINTENANCE
INTEGRATED WIPER VERSION AVAILABLE
WEATHERPROOF STANDARD IP66/IP67
SUITABLE FOR ANALOG AND IP CAMERAS
DAY/NIGHT AND IR THERMAL VERSIONS AVAILABLE
REFINED AND MODERN DESIGN



168SH CAMERA HOUSING WITH SUNSHIELD AND HEATER

TECHNICAL SPECIFICATIONS

GENERAL & MECHANICAL

Dimensions	See drawings next page
Operating Temperature	-20° +60°C (-4° +140° F)
Construction	AISI316L Stainless Steel
Finish	Electro-polished
Mounting	See drawings next page
Cable entries	4 M20x1,5 nickel plated brass cable glands (included) Standard cable diameter 5-10mm

Weight		
Model	Unit [kg]	Package [kg]
168SH/168SHIR	11	13
168WW/168WWIR	12	14

ELECTRICAL

Thermostatically controlled heater	
T[°C] ON	12 ± 4°C, T[°C] OFF = 20 ± 3°C
Available voltages	24VUC(24V~/VDC), 230V~ (+/-10%)
Power consumption	15W

Wiper	
Available voltages	24V~, 230V~, 24VDC (+/-10%)
Power consumption	6W (24V~, 230V~) 4W (24VDC)

CERTIFICATIONS

Ingress Protection(EN 60529)	IP66/IP67
EMC	EN 61000-6-3:2007; EN 50130-4:1995 + A1:1998 + A2:2003
LVD	EN 60950-1:2006 + A11:2009
RoHS	2011/65/EU
WEEE	2012/19/EU

MODELS

168SH/24¹	Housing + sunshield + heater. Supply voltage: 24 VUC
168SH/230¹	Housing + sunshield + heater. 230 V~
168WW/24²	Housing + sunshield + heater + integrated wiper. 24 V~
168WW/230²	Housing + sunshield + heater + integrated wiper. 24 VDC
168SHIR70/24³	Housing + sunshield + heater. 24 VUC
168SHIR70/230³	Housing + sunshield + heater. 230 V~
168WWIR70/24³	Housing + sunshield + heater + integrated wiper. 24 V~
168WWIR70/230³	Housing + sunshield + heater + integrated wiper. 24 VDC
168SHIR110/24⁴	Housing + sunshield + heater. 24 VUC
168SHIR110/230⁴	Housing + sunshield + heater. 230 V~
168WWIR110/24⁴	Housing + sunshield + heater + integrated wiper. 24 V~
168WWIR110/230⁴	Housing + sunshield + heater + integrated wiper. 24 VDC
168WWIR110/230⁴	Housing + sunshield + heater + integrated wiper. 230 V~

- ¹ Usable front window diameter: 130 mm. Thickness: 5 mm. Tempered glass
² Usable front window diameter: 104 mm. Thickness: 12 mm. Vandal resistant glass
³ Usable front window diameter: 70 mm. Thickness: 3 mm. Germanium, AR/DLC coating
⁴ Usable front window diameter: 110 mm. Thickness: 3 mm. Germanium, AR/DLC coating

MOUNTING ACCESSORIES

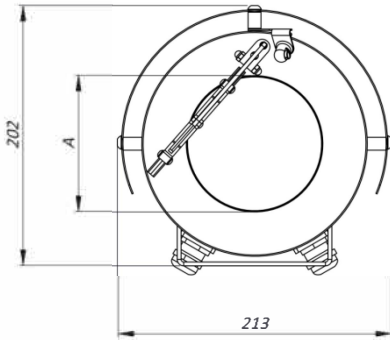
SSBK168	Wall mounting bracket with swivel joint for 168 Series
SSPM168	Pole mount adapter for SSBK168

ACCESSORIES AND SPARE PARTS

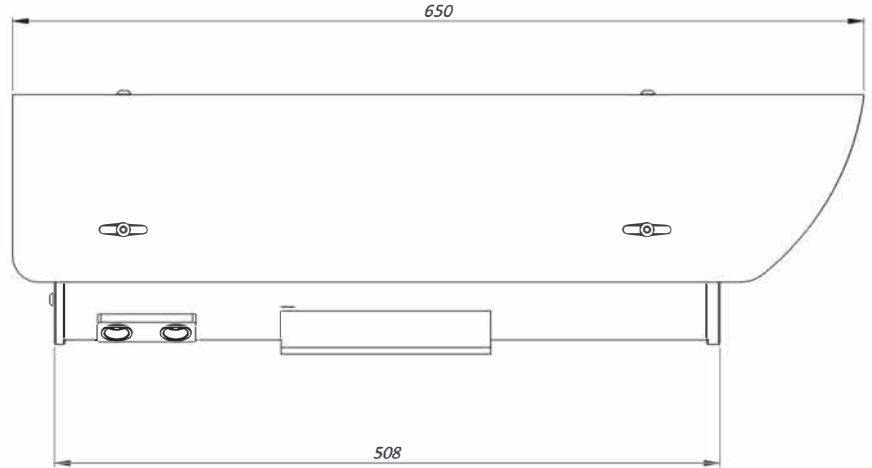
RX2410	Telemetry controller for fixed wash/wiper housings
WB168	Wiper blade (complete assembly)
WBK168	Wiper blade (only spare part: rubber blade and support)
HK168/24	15W heater kit (24VUC)
HK168/230	15W heater kit (230V~)
MK168	Maintenance kit with O-Ring seals, screws seals, screws, cable glands (2), desiccant bags

DIMENSIONS

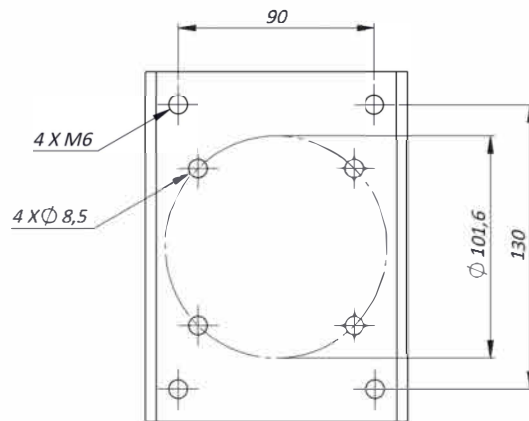
FRONT VIEW



SIDE VIEW



MOUNTING PATTERN



Your authorized TECNOVIDEO distributor:

MOVITHERM

advanced thermography solutions

15540 Rockfield Blvd, Suite C-110
Irvine, CA 92618

Phone: (949) 699-6600

Fax: (949) 699-6601

Email: info@movitherm.com

<http://www.movitherm.com>

FOR "A" VALUES CHECK "MODELS" SECTION

MAX INTERNAL USABLE AREA

Model	Max internal dimensions [mm]	Max usable internal diameter [mm]
168SH	96x96x348	131
168WW	96x96x348	123