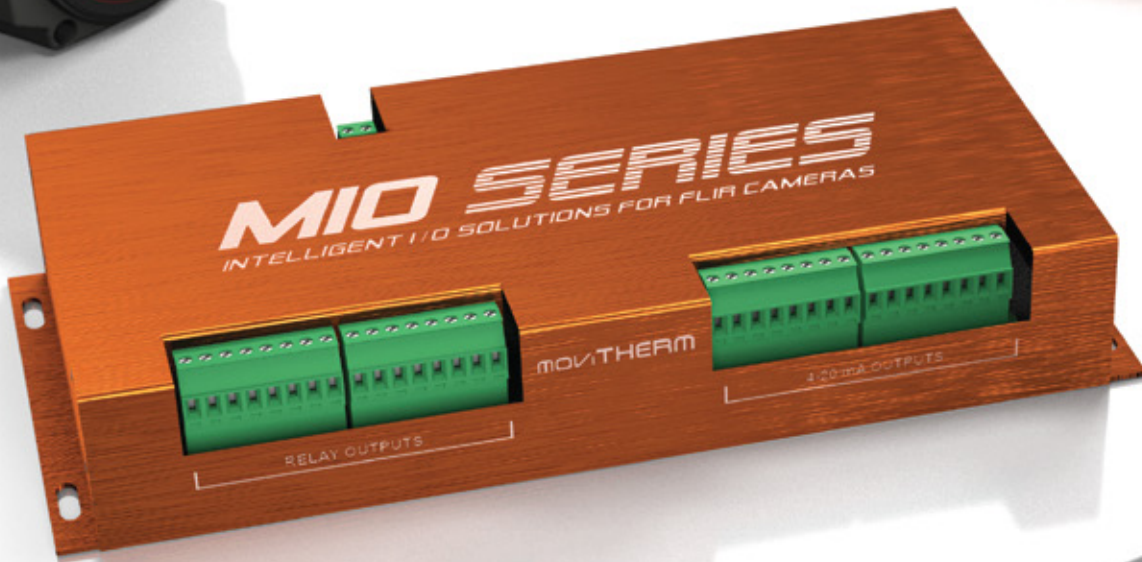


# Intelligent I/O Solutions for FLIR Cameras

Compatible with FLIR AX8 and A310/f



Scalable remote monitoring. No programming.

- 4-20 mA Outputs
- 24VDC Digital Outputs
- Ethernet Connectivity

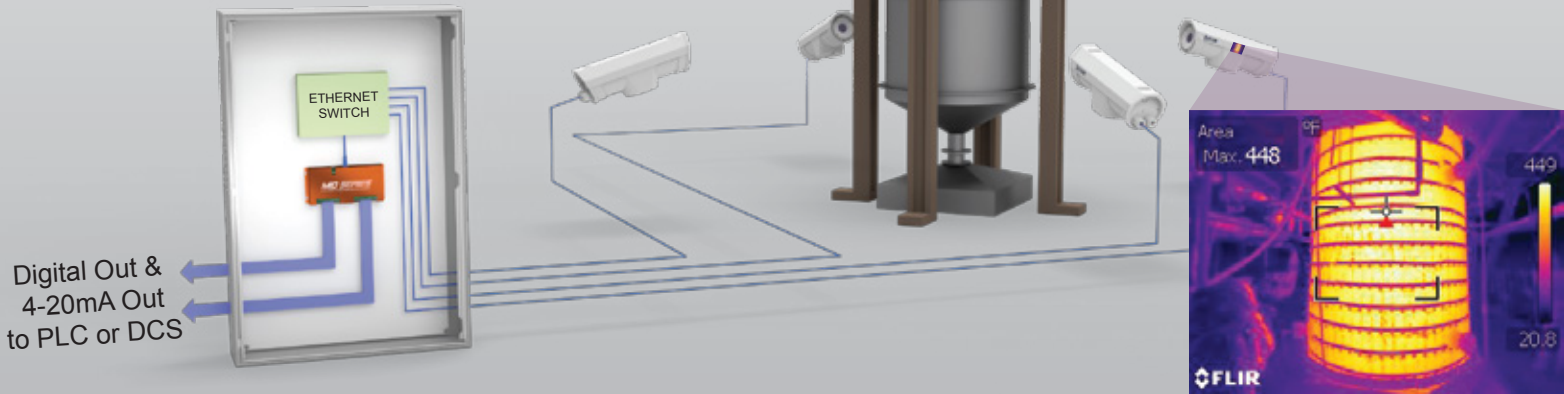


# Industrial

The MIO series I/O modules allow the design of robust industrial monitoring applications. The industry standard 4 to 20 mA interface and 24VDC alarm outputs of the MoviTHERM MIO Series Intelligent I/O module provide a cost effective remote monitoring solution. The system is easily scalable from 1 to 100+ cameras, thus keeping the design effort and needed infrastructure for a high-camera count monitoring system to a minimum. Conveniently place the MIO series I/O module where the I/O is needed – anywhere on the camera network. This solution eliminates the need for a PC based monitoring system, moving parts, Windows Operating System or other typical failure points. Just reliable and robust performance that you would expect from an embedded solution.

✓ 8 Channels of 4 to 20 mA

✓ 8 Digital Outputs



Application Example  
Critical Vessel Monitoring  
with FLIR A310f Cameras

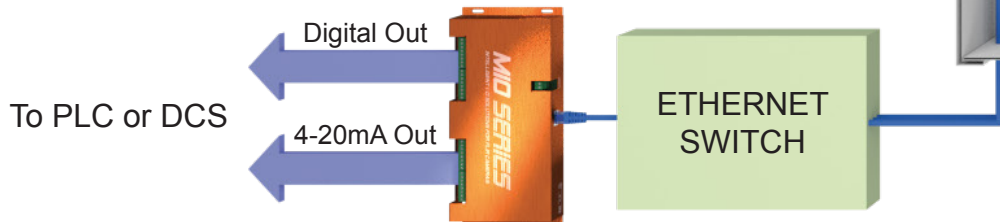
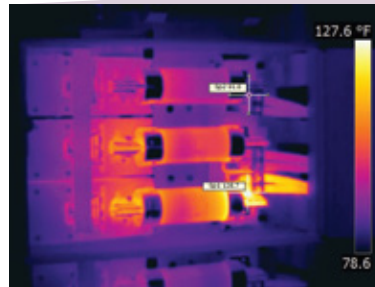


# Distributed I/O, Scalable

The MIO Series intelligent I/O module instantly turns FLIR cameras (\*) into a complete remote monitoring system. There is no need for PLC programming or software development. One MIO module provides 8 digital alarm outputs and an additional 8 channels of 4 to 20 mA. Simply connect the module to the same network as the the FLIR cameras and the module handles the rest. The module can be configured remotely via the built-in web server. Each MIO Series I/O module supports up to 7 cameras. Expanding the system is as easy as adding more I/O modules to the network.

## Application Example Electrical Panel Monitoring with FLIR AX8 Cameras

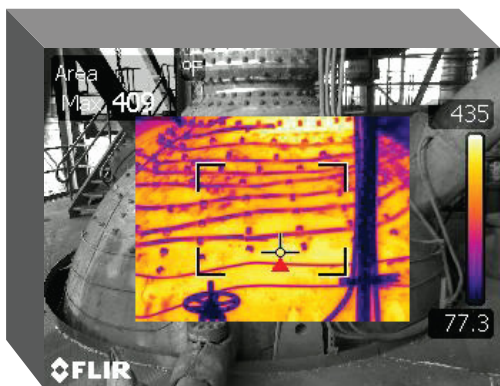
- ✓ **Up to 7 Cameras per MIO Module**
- ✓ **Scalable to 100+ Cameras**



# Intelligent

A microcontroller inside each MIO Series I/O module automatically finds and connects to all configured cameras on the network. The built-in system health feature reports an alarm if a configured camera is unresponsive or has dropped off the network. The user can choose between MIN, MAX and AVERAGE temperature readings per each configured region of interest (ROI) in each camera. Each alarm output has its own alarm threshold, supporting complex monitoring applications. Configured ROIs in each camera can be mapped to eight 4 to 20 mA analog outputs. All alarms and 4 to 20mA outputs are updated in real time at approximately 8 Hz. Selecting a signal averaging function will slow the update rate to approximately 1 Hz.

- ✓ **Alarm monitoring based on MAX, MIN or AVERAGE temperature readings**
- ✓ **Configuration of Camera and I/O module via web-server**
- ✓ **Receive Alarm Images via Email or FTP**



Region of Interest (ROI)  
logic configured in FLIR Camera



ROIs monitored by MIO module

ROI signals mapped to  
4 to 20 mA and/or digital out

(\*) The MIO Series intelligent I/O modules are compatible with FLIR A310 or FLIR AX8 cameras.

# MIO SERIES

Intelligent I/O Solutions for FLIR Cameras



## Technical Data

MODEL	MIO-AX8	MIO-A310
Compatible Cameras	FLIR AX8	FLIR A310, FLIR A310f
Maximum Cameras Supported	7	
Ethernet Connection	100Base-T	
Communication Protocol	Modbus TCP/IP	
4-20mA Transmitter Channels	8 CH, Loop Powered, Isolated	
Relay Channels	8	
Relay Type	Solid State	
Relay Rating	60VDC	
Power Supply Voltage	24VDC	
Maximum Power Consumption	3W	
Dimensions (L x W x H )	8.7 x 4.1 x 1.4 in (223 x 104 x 35 mm)	
Weight	1.5 lbs (0.68 kg)	
Housing Material	Anodized Aluminum	

